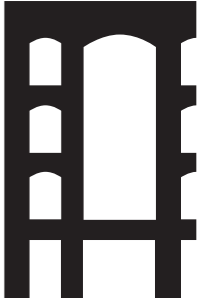


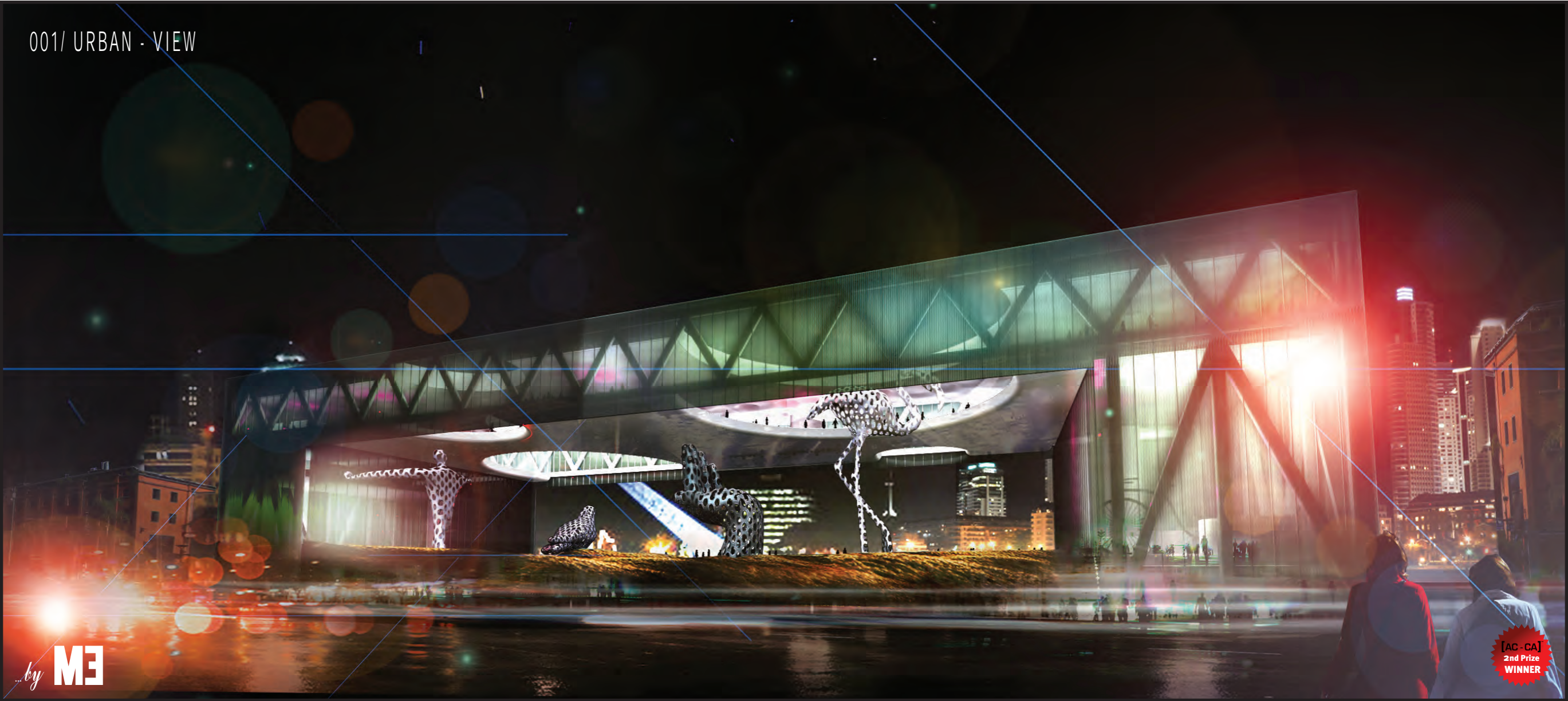
**[AC - CA]
2nd Prize
WINNER**

new competition

NEW CONTEMPORARY ART MUSEUM



001/ URBAN - VIEW



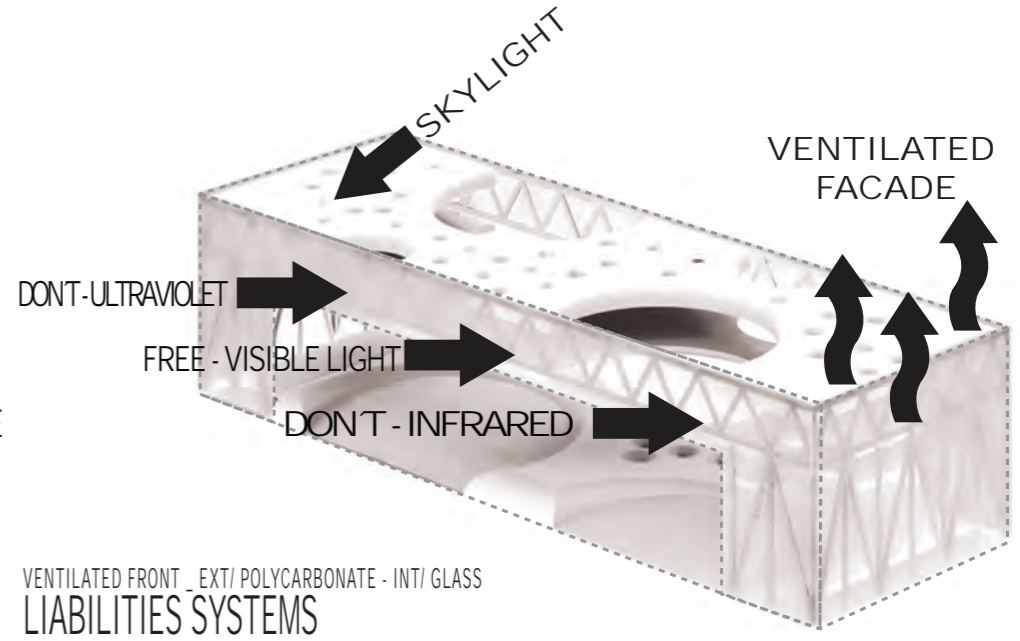
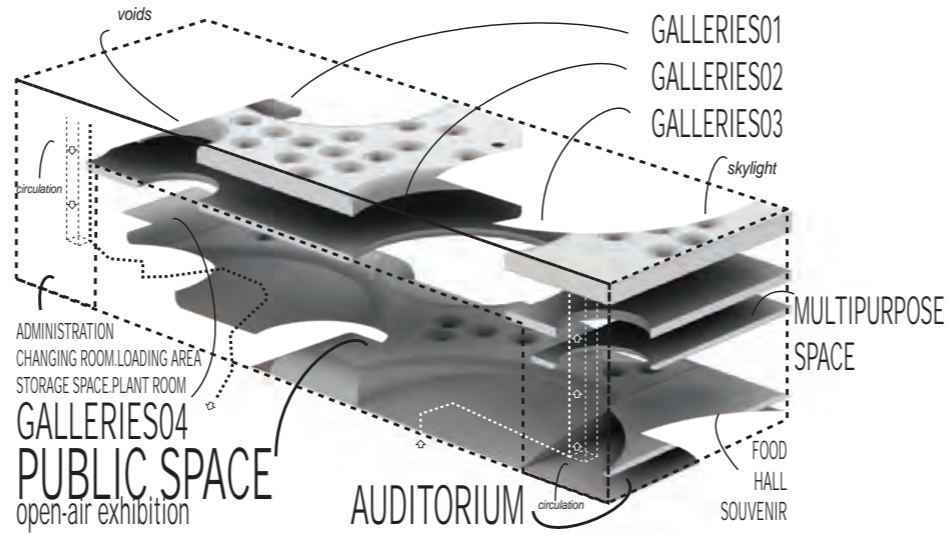
by M3

[AC - CA]
2nd Prize
WINNER

NEW CONTEMPORARY ART MUSEUM

GALLERIES 01 GALLERIES 02 GALLERIES 03
MULTI AREA FOODSOUVENIR AUDITORIUM
PUBLIC SPACE GALLERIES 04 ADMINISTRATION

SINGLE CIRCUIT



002/ AERIAL - VIEW



...by M3

[AC - CA]
2nd Prize
WINNER

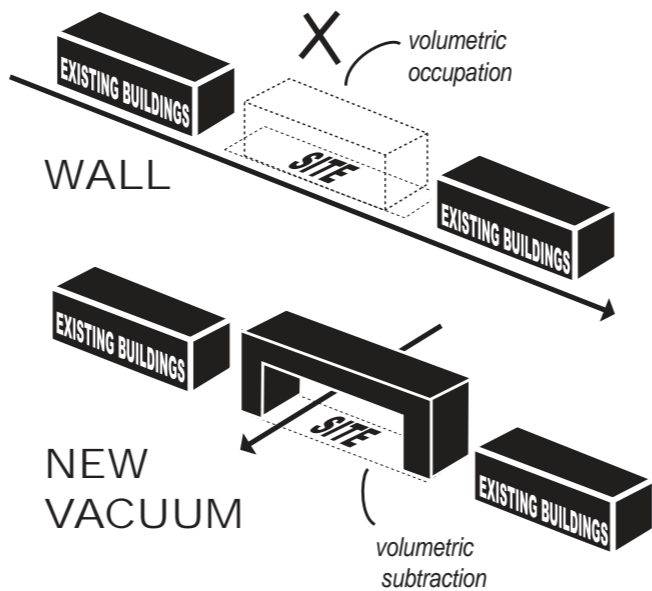
01



A new museum, a new building, a new window in the city of Buenos Aires overlooking the coastline o Puerto Madero District.

SKY LINE MODIFIER.
Modifying the skyline of Puerto Madero District, a new contact point is created between the centre of Buenos Aires and its coastline.

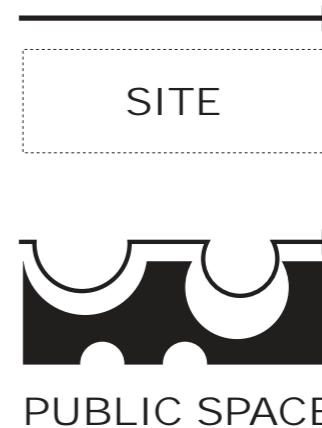
02



The new Museum of Contemporary Art is constructed inverting the relationship between the full and empty spaces along the construction line of Puerto Madero District.

The new building is erected along the coastline creating in its interior an empty space.

03



The new Museum of Contemporary Art is built as an urban space for de general public, and does not generate a espace for the exclusive use of these people who are only interested in visiting a museum.

The opportunity to make a new building in the central area of Puerto Madero District becomes one of a new space for the city.

003/ PUBLIC SPACE - VIEW

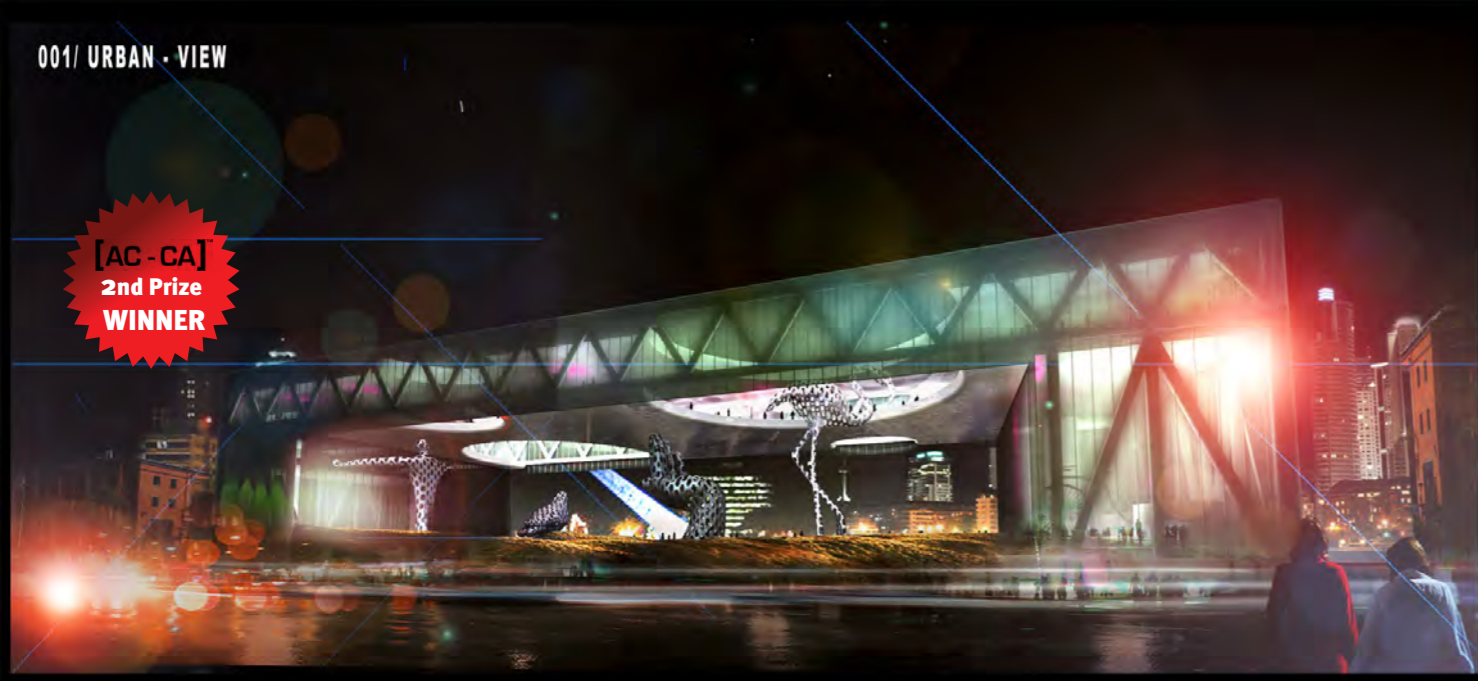


by M3

[AC - CA]
2nd Prize
WINNER

001/ URBAN - VIEW

[AC - CA]
2nd Prize
WINNER

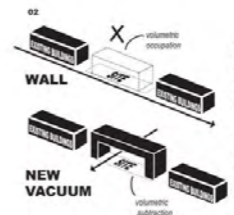


NEW CONTEMPORARY ART MUSEUM
GALLERIES 01 GALLERIES 02 GALLERIES 03
PUBLIC SPACE
SINGLE CIRCUIT



01
PUERTO MADERO DISTRICT
URBAN LANDMARK

A new museum, a new building, a new window in the city of Buenos Aires overlooking the coastline o Puerto Madero District.
SKY LINE MODIFIER: Modifying the skyline of Puerto Madero District, a new contact point is created between the centre of Buenos Aires and its coastline.

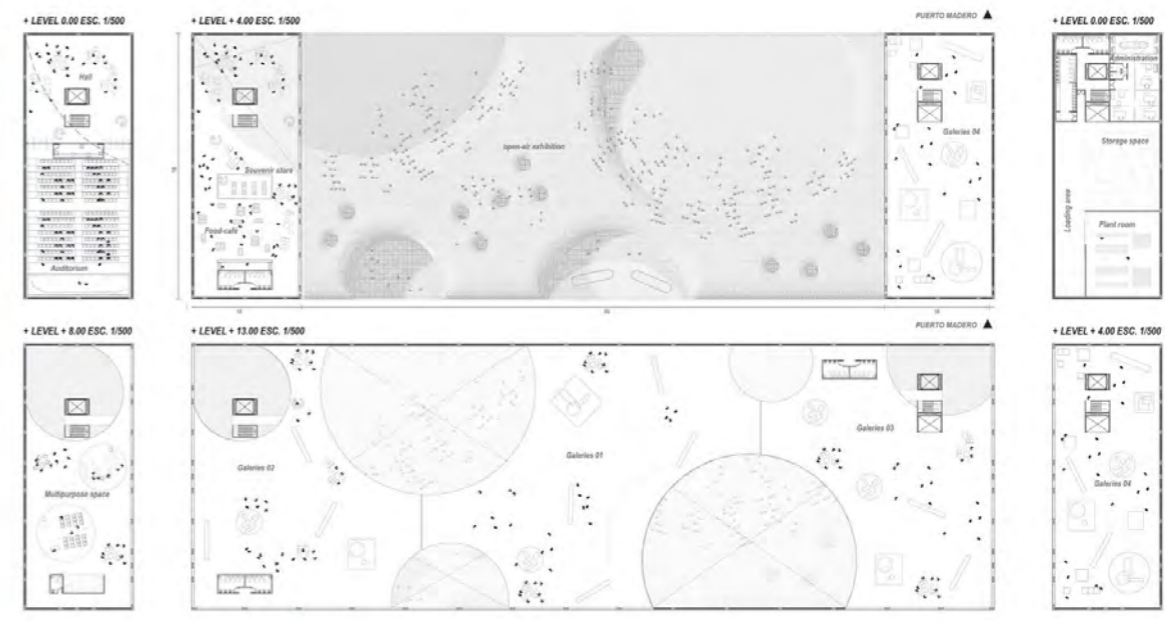


02
The new Museum of Contemporary Art is constructed inverting the relationship between the full and empty spaces along the construction line of Puerto Madero District.
The new building is erected along the coastline creating in its interior an empty space.



03
The new Museum of Contemporary Art is built as an urban space for the general public, and does not generate a space for the exclusive use of those people who are only interested in visiting a museum.
The opportunity to make a new building in the central area of Puerto Madero District becomes one of a new space for the city.

002/ AERIAL - VIEW



003/ PUBLIC SPACE - VIEW

